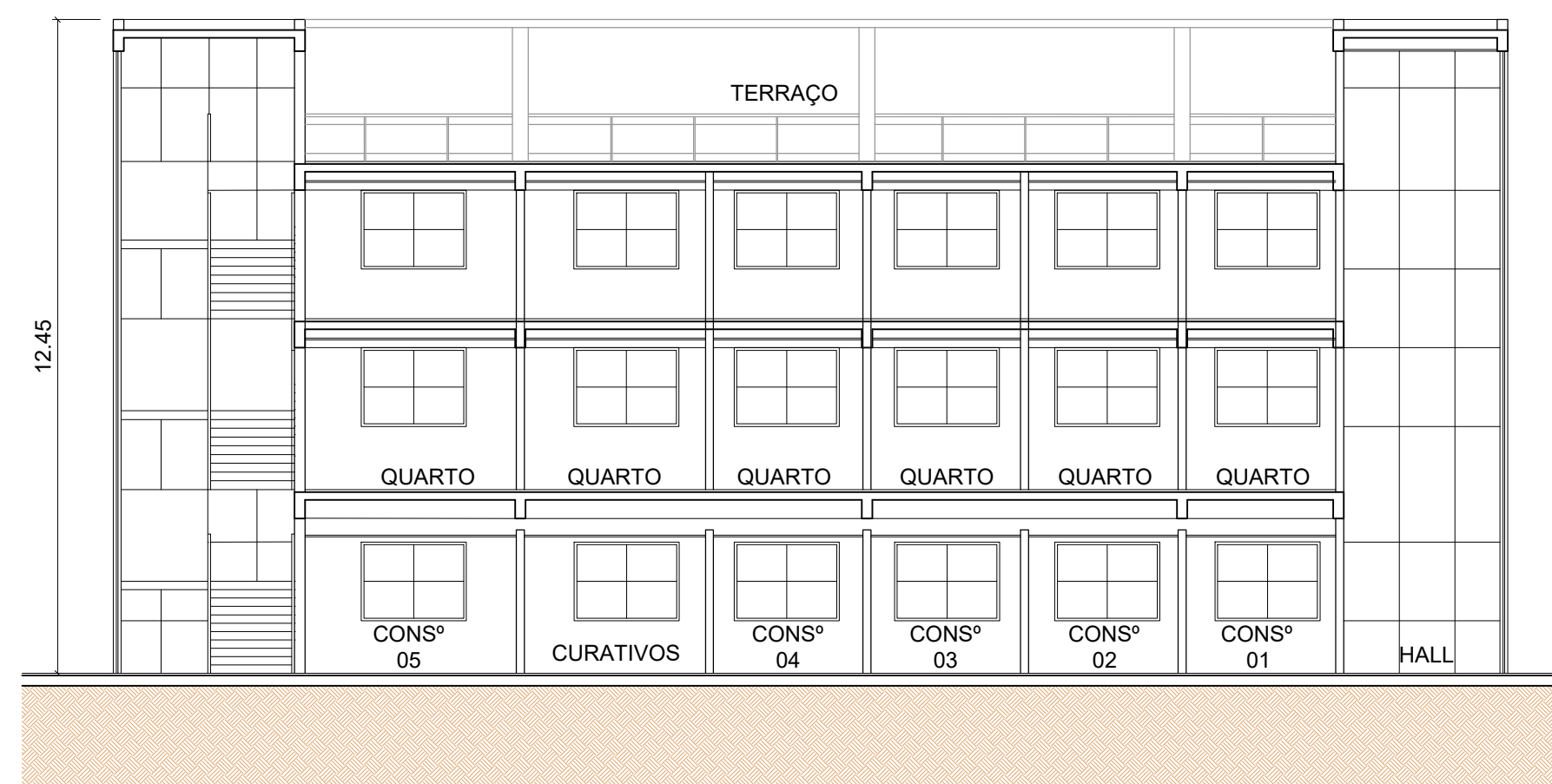
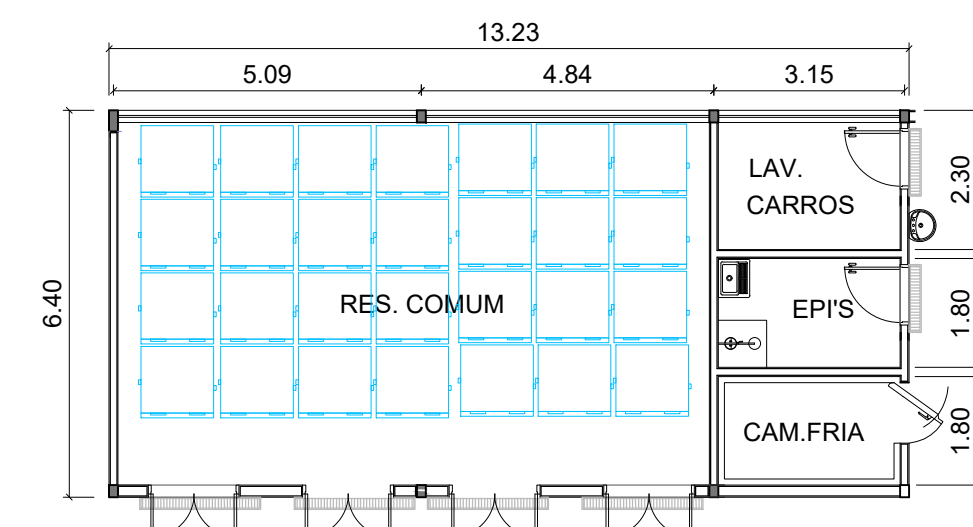


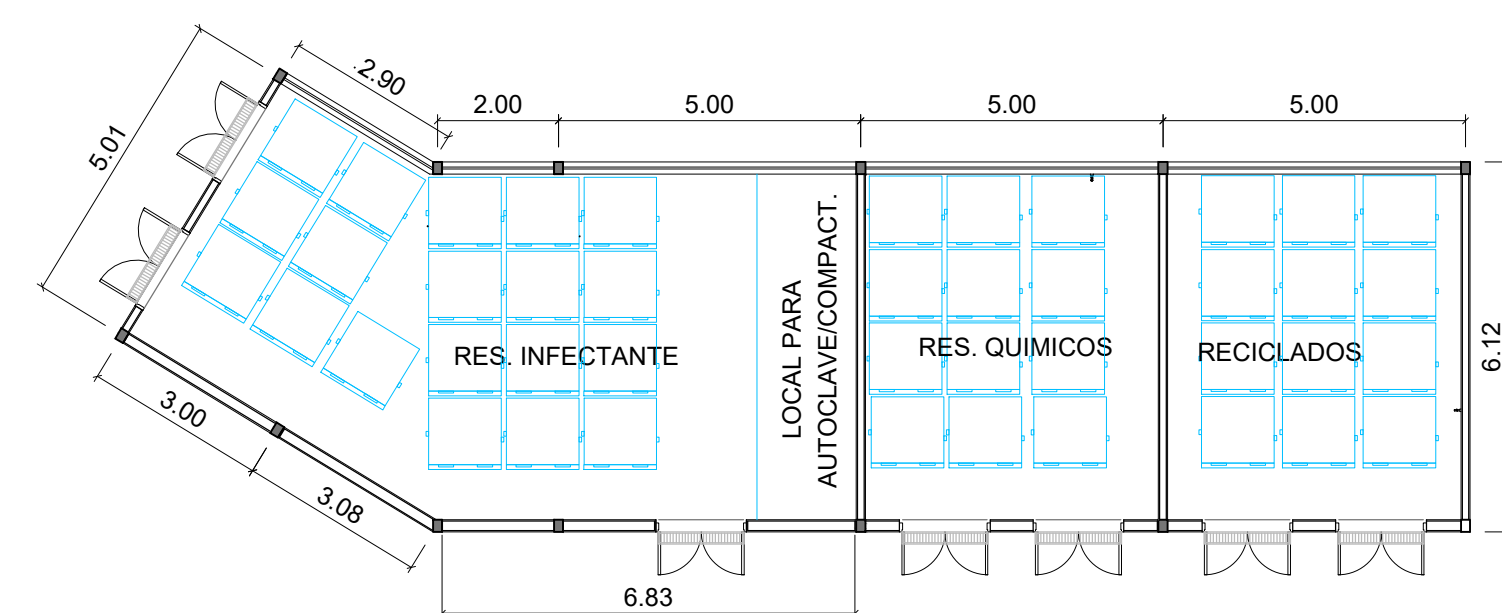
AMBULATÓRIO - PLANTA BAIXA - COBERTURA



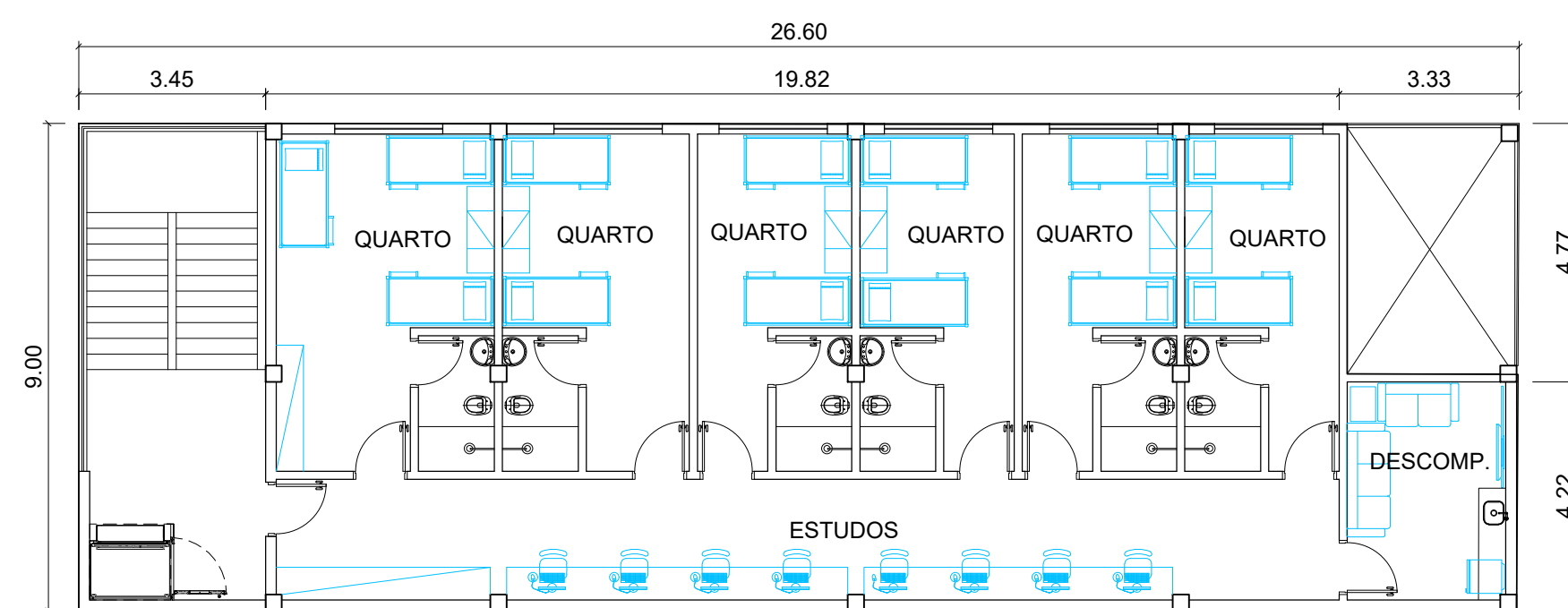
AMBULATÓRIO - CORTE LONGITUDINAL



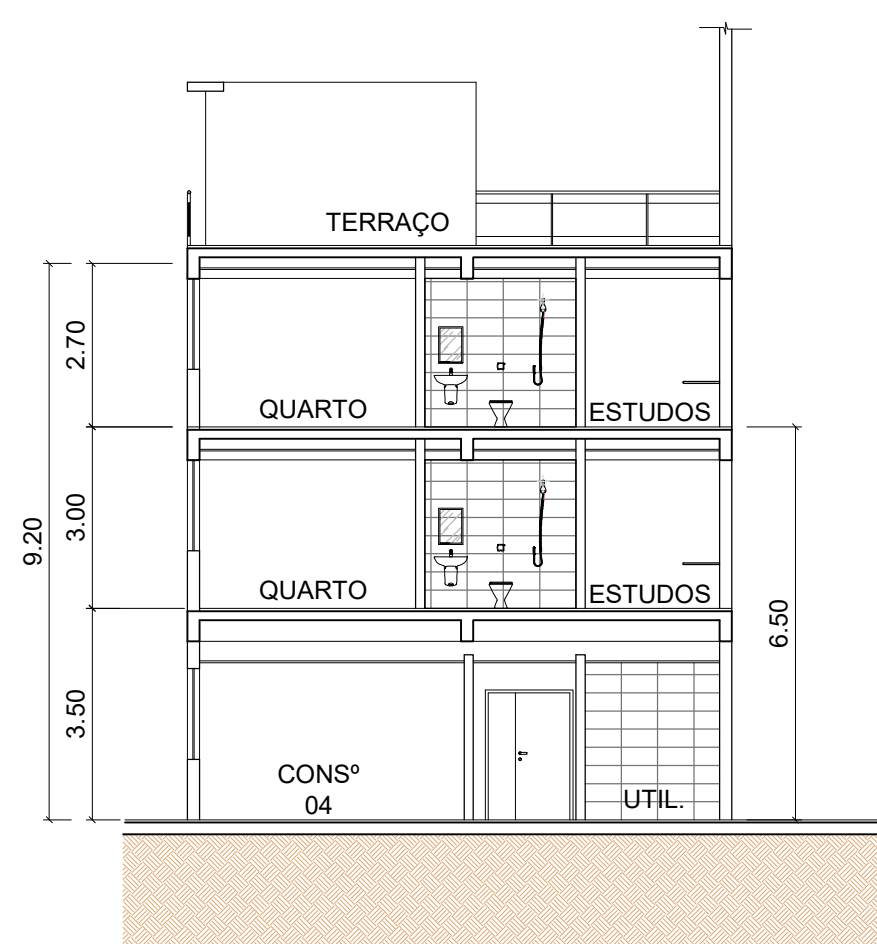
RESÍDUOS 01 - PLANTA BAIXA



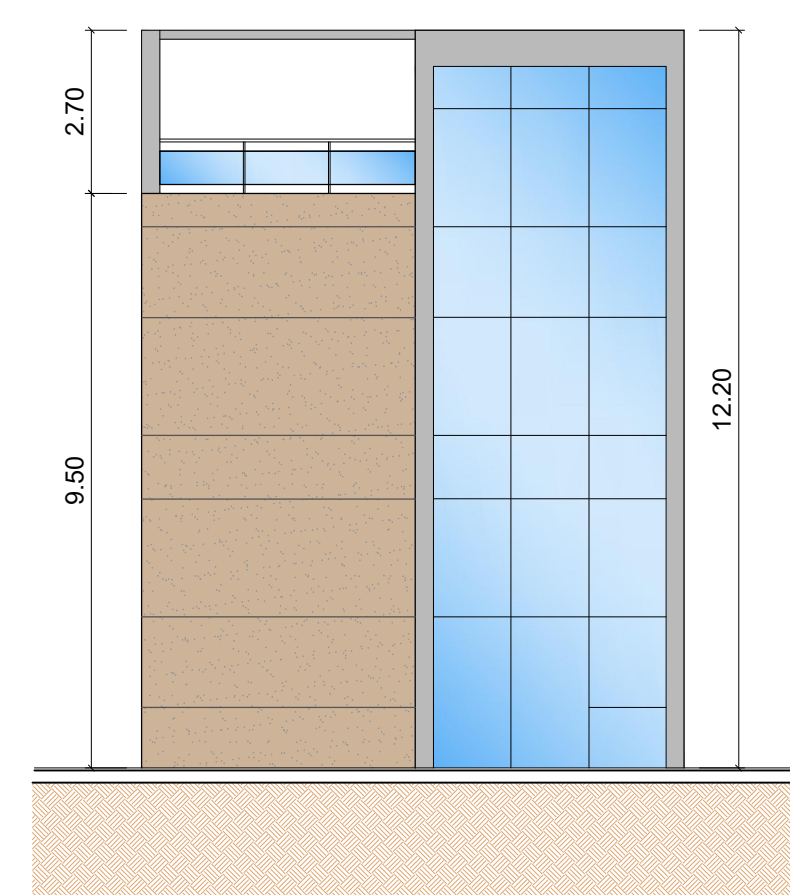
RESÍDUOS 02 - PLANTA BAIXA



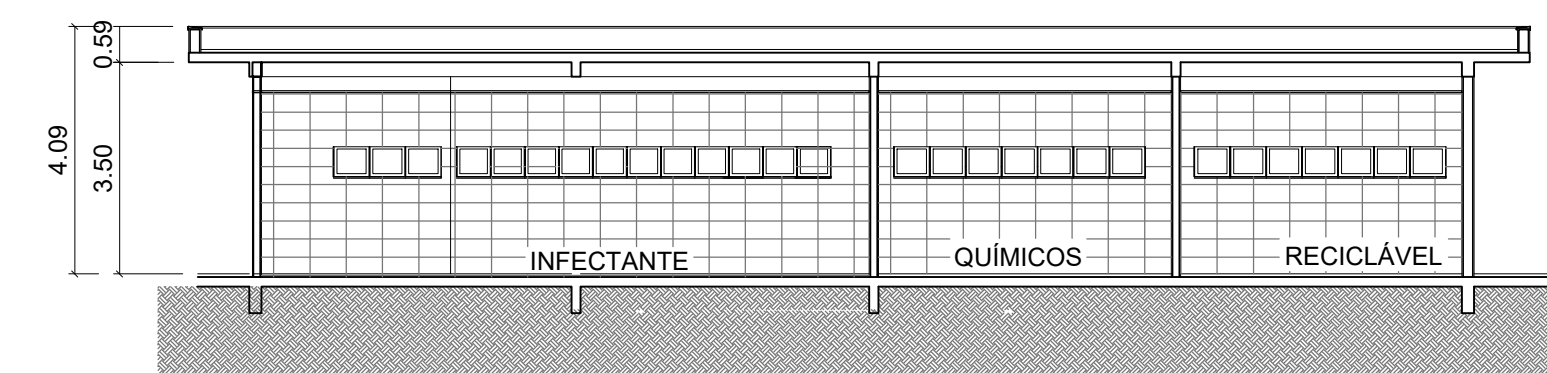
AMBULATÓRIO - PLANTA BAIXA - 2º e 3º PAVIMENTOS



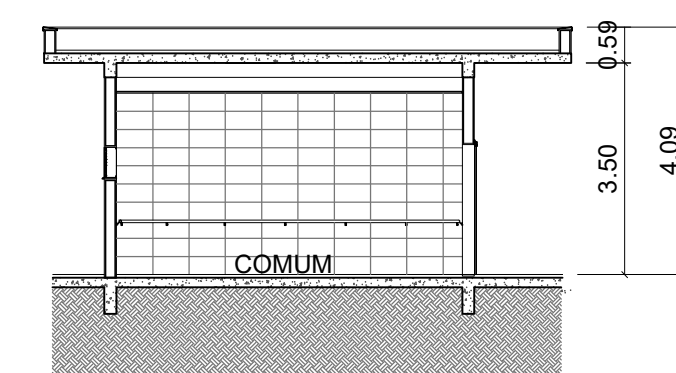
AMBULATÓRIO - CORTE TRANSVERSAL



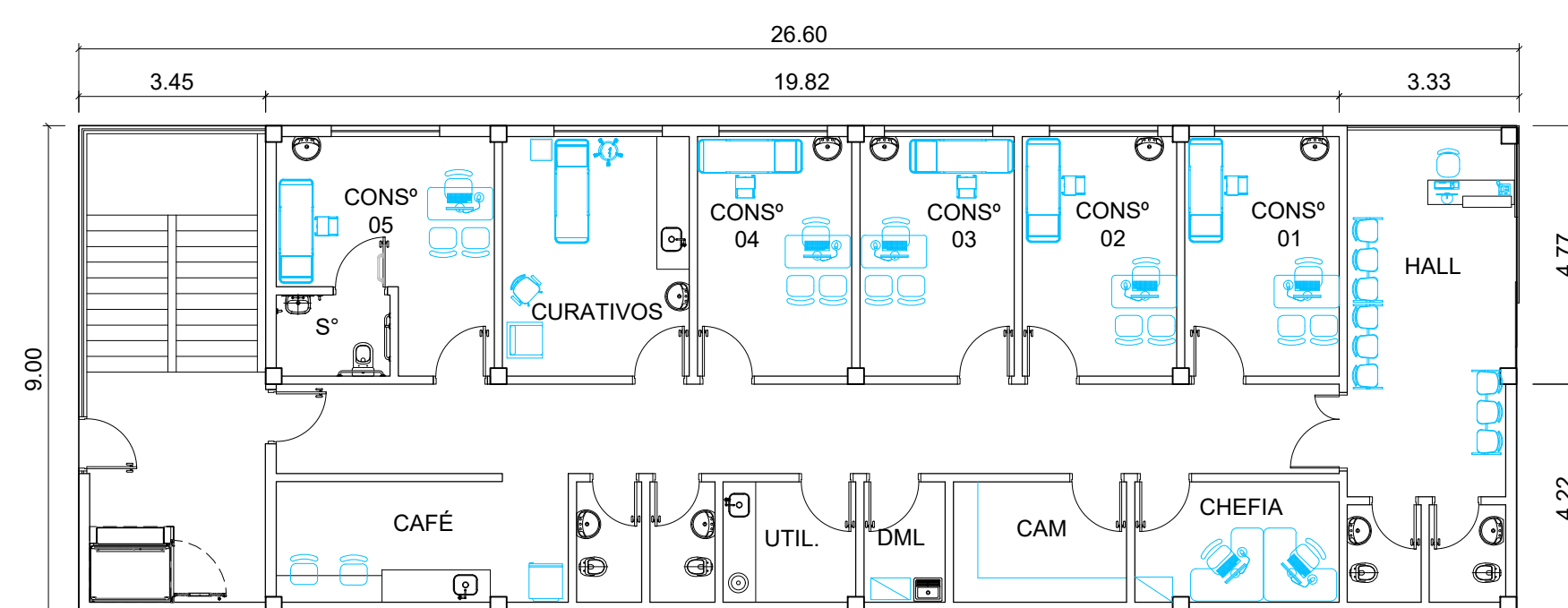
AMBULATÓRIO - ELEVAÇÃO TRANSVERSAL



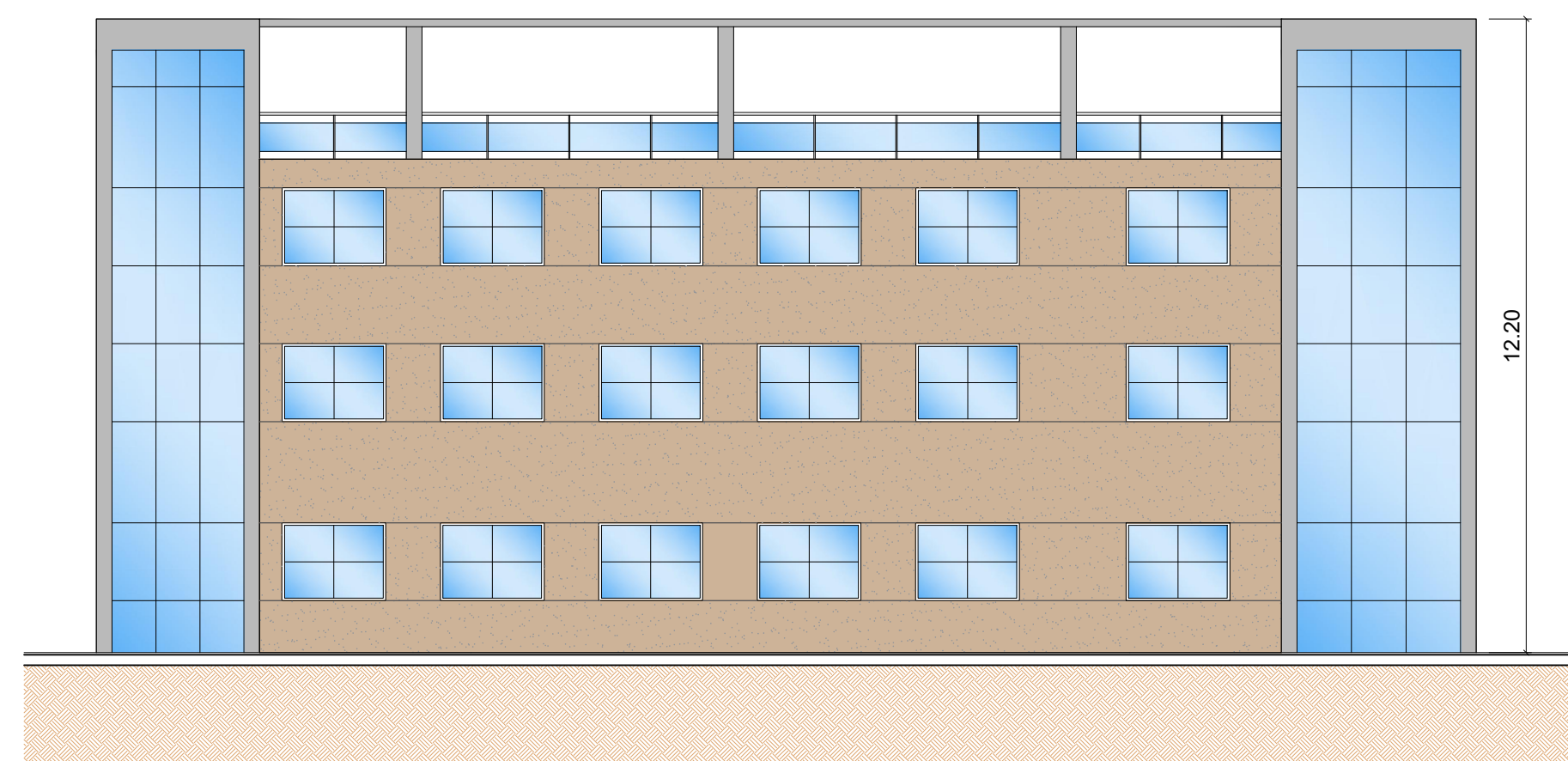
RESÍDUOS 02 - CORTE LONGITUDINAL



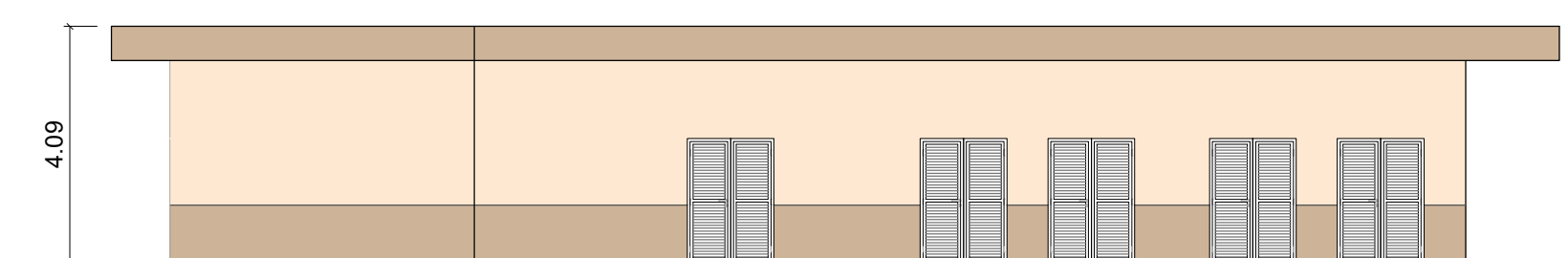
RESÍDUOS 01 - CORTE TRANSVERSAL



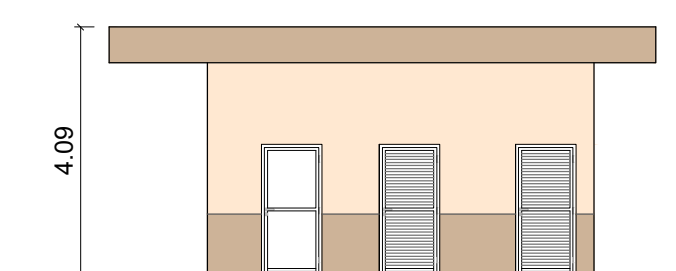
AMBULATÓRIO - PLANTA BAIXA - 1º PAVIMENTO



AMBULATÓRIO - ELEVAÇÃO LONGITUDINAL



RESÍDUOS 02- ELEVAÇÃO LONGITUDINAL



RESÍDUOS 01- ELEVAÇÃO TRANSVERSAL